

Server Update

for eRAD RIS

Version 2.0






Build 2.2016.7

Update 2.2016.7.11

Table of Contents

Package Contents	3
Intended Audience	3
Who is affected.....	3
New Features.....	4
Feature #17394 – Utilization Management Orders for gold carded physicians will automatically route to scheduling	4
Feature #17460 - UM Clock now starts counting when the order first qualifies as Utilization Review Required	6
New Configuration settings	7
System configuration settings	7
Resolved Items	8
Code Stream	9
eRAD RIS Release Version Numbers	10
Installing	11
Client/GUI.....	11
Web Service	11
Database Updates	13

PACKAGE CONTENTS

 _ReleaseNotes	06/19/2017 11:50 AM
 DB	06/19/2017 9:40 AM
 rRISService	06/19/2017 9:39 AM
 Service Tools	06/19/2017 9:42 AM
 ThickClient	06/19/2017 11:44 AM

INTENDED AUDIENCE

The intended audience for this document is the RadNet Clinical Systems team and the eRAD Support/Service team.

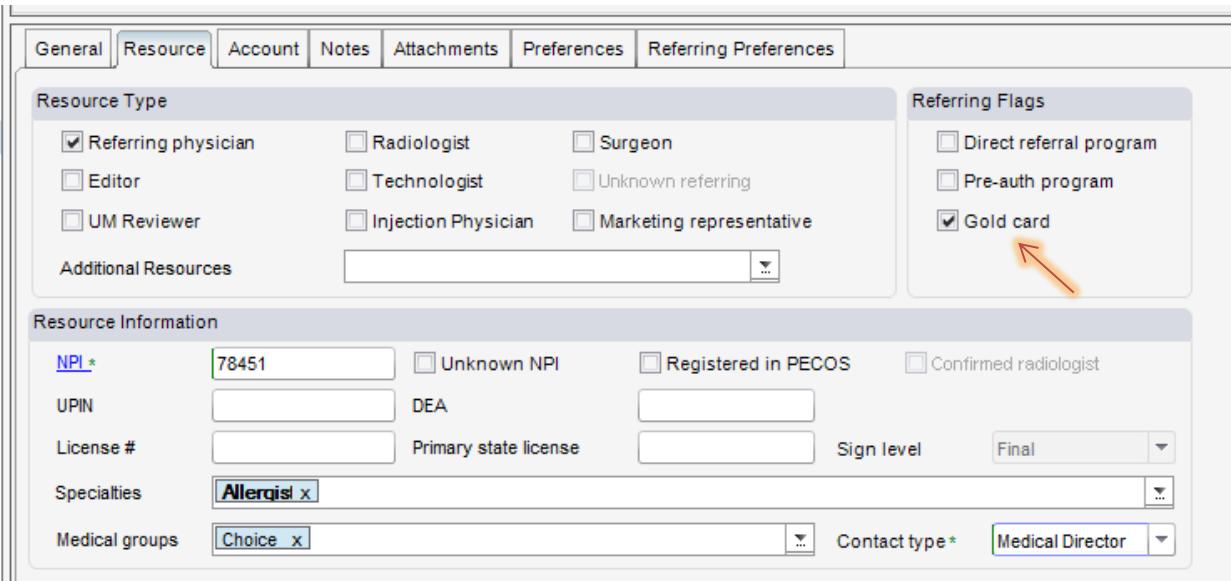
WHO IS AFFECTED

Build 2016.7 installs. This server update must be applied to 2016.7.10.

NEW FEATURES

FEATURE #17394 – UTILIZATION MANAGEMENT ORDERS FOR GOLD CARDED PHYSICIANS WILL AUTOMATICALLY ROUTE TO SCHEDULING

Previously, when a referring physician was flagged as “Gold Card” eRAD RIS would display this flag and the corresponding notes, but it was up to the UM reviewer to evaluate the notes and determine whether the order should bypass the utilization review process.



The screenshot displays the 'Referring physician' configuration window in eRAD RIS. The 'Resource Type' section includes checkboxes for 'Referring physician' (checked), 'Editor', 'UM Reviewer', 'Radiologist', 'Technologist', 'Injection Physician', 'Surgeon', 'Unknown referring', and 'Marketing representative'. The 'Referring Flags' section on the right has checkboxes for 'Direct referral program', 'Pre-auth program', and 'Gold card' (checked). An orange arrow points to the 'Gold card' checkbox. Below these sections is the 'Resource Information' section with fields for NPI (78451), UPIN, License #, Specialties (Allergis), Medical groups (Choice), and Contact type (Medical Director).

It is now possible to configure eRAD RIS to automatically bypass the Utilization Review workflow when the referring physician is flagged as Gold Card. With this configuration, schedulers can proceed immediately to schedule the procedure without waiting for the utilization review process. The order is automatically flagged as UM Complete and a UM Tracking Number is assigned.

To enable this workflow, a new system configuration value called [UMGoldCardAutoApprove](#) with a default value of “True” has been added to the system.

When [UMGoldCardAutoApprove](#) is enabled, any orders for Gold Card physicians that require utilization review will be given a new UM Tracking Number and marked as UM Complete, so they can advance to scheduling immediately.

When [UMGoldCardAutoApprove](#) is *disabled*, any orders for Gold Card physicians that require utilization review will be given a new UM Tracking Number and marked as UM Required, so they can advance to the Utilization Management Worklist to be reviewed.

Schedulers will be able to identify that a referring physician is part of Gold Card by looking at the label next to the referring physician's name on the Order tab. It will appear in the same location as the existing label for "Pre-auth program." A referring physician can be labeled as Gold Card, Pre-auth program, or both.

Orders To Schedule (497) Schedule Order: UM, Diana #8977PE x

Patient Patient Notes Contacts / Demographics **Order** Clinical Schedule Image Request (0) Billing Codes Review Contact Log UM

Reason for exam
chest pain

Referring Details
Referring * Smith, Alfons, (Gold card)
Visited at * Milton Road, 167 White Hague St., Seattle, Vermont, 48941
Img notes Test Notes

CC Physicians
Visit location for CO
☐ Copy to patient

Preferred Location
Practice * (ADV) Advanced Radiology
Site (EL) Eldersburg

Flags
☐ Direct referral ☐ Transportation required
☐ STAT exam Special accommodations * No
☐ STAT read
☐ STAT PreCert

Class * Unknown
Sedation
☐ Transition of care
☐ Provided educational res.

FEATURE #17460 - UM CLOCK NOW STARTS COUNTING WHEN THE ORDER FIRST QUALIFIES AS UTILIZATION REVIEW REQUIRED

The UM Clock previously used an order's requested date as the start value (time stamp). Typically, this is the date the order was created in RIS. There are some scenarios where the UM Clock should not use the requested date of the order as a starting point, but rather the date the procedure became qualified for utilization review. For example, an order exists for an X-Ray (UM not required). The X-Ray is changed to a CT procedure 2 days later, which requires utilization review. Since the procedure did not require utilization review until it was changed to a CT, the UM Clock will not use the date that the original order (X-Ray) was created. The UM Clock will instead start as soon as the order first required utilization management (i.e. the date it was changed to a CT).

A new column called [*um_received_date*](#) has been added to the c_order_item table. This date/time column will get set anytime a procedure is flagged for utilization review. The UM Clock will use the Received Date as the start parameter.

If an order has multiple procedures that require utilization review, the system will use the oldest Received Date.

If for some reason there is not a Received Date available, the system will revert back to using the Requested Date at the order level which is always available.

NEW CONFIGURATION SETTINGS

SYSTEM CONFIGURATION SETTINGS

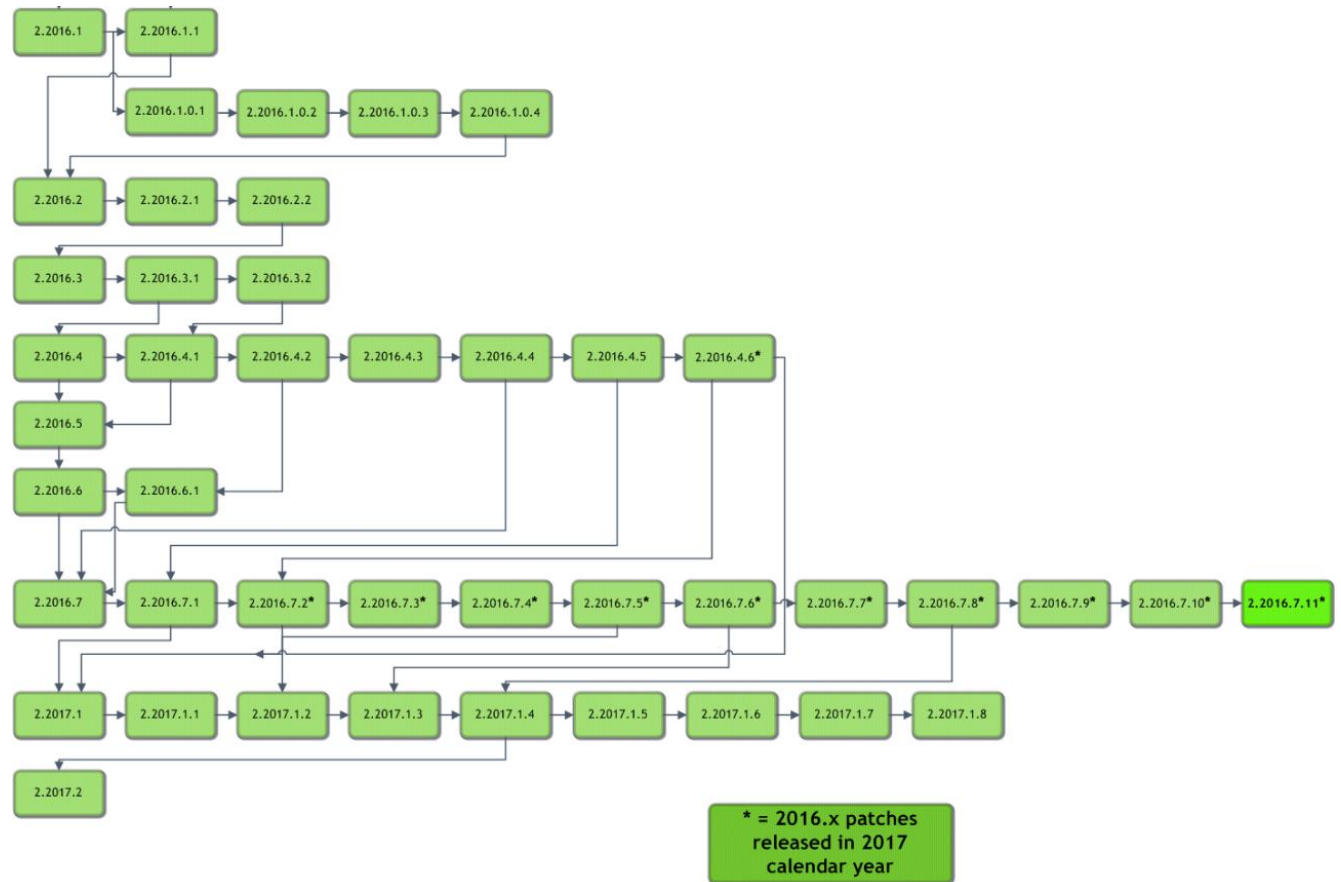
Setting	Default	Purpose
UMGoldCardAutoApprove	True	(value = True/False) Determines if gold carded providers are automatically approved by UM.

RESOLVED ITEMS

eRAD RIS

Redmine #	Subject
17525	UM External Notes are now visible to schedulers.
17524	UM - When recommending an additional procedure, the reviewer can now adjust the authorization status for the additional procedure (previously this was read-only).
17508	Opening the Scheduling screen while an IVT or Utilization Review screen is open for the patient will no longer cause an exception.
17394	Utilization Management Orders for gold carded physicians now automatically route to scheduling. (See Features section)
17460	UM Clock now starts counting when the order first qualifies as Utilization Review Required. (See Features section)
17463	Insurance Eligibility will now run as soon as the Utilization Review screen is opened. (Previously for UM workflow, Manage Policies had to be opened first.)
17461	UM Connect no longer displays cancelled orders on the Orders tab.
17429	Resolved an issue that was caused by a Follow Up Type Code with a single quote character. The "Missing operand after" exception will no longer display.
17391	Resolved an issue that could cause "DataTable internal index is corrupted" exceptions.

CODE STREAM

**Legend:**

Light Green = Previously Released software

Bright Green = Current Release

ERAD RIS RELEASE VERSION NUMBERS

Build	Patch	UI Version	Core Version	WS Version	DB Version	Digital Forms	Patient Portal	UM Portal	Provider Portal	Notes
2016.2	-	2.16.2.0 (3GB)	2.16.2.0	2.16.2.0	2.16.2.0.00172540					Full Version Release - GUI.zip, Web Service, DB, Management Reports, Questionnaire and Citrix Bridge
2016.2	1	2.16.2.1 (3GB)	2.16.2.0	2.16.2.0	2.16.2.0.00172540					GUI.zip and Citrix Bridge
2016.2	2	2.16.2.2 (3GB)	2.16.2.0	2.16.2.0	2.16.2.2.00243102					GUI.zip, DB and Citrix Bridge
2016.3	-	2.16.3.0 (3GB)	2.16.3.0	2.16.3.0	2.16.3.0.00257101	2.16.3.0				Full Version Release
2016.3	1	2.16.3.1	2.16.3.0	2.16.3.1	2.16.3.1.00298834	2.16.3.0				GUI.zip, Web Service and DB
2016.3	2	2.16.3.2	2.16.3.0	2.16.3.2	2.16.3.1.00298834	2.16.3.0				GUI.zip and Web Service
2016.4	-	2.16.4.0	2.16.4.0	2.16.4.0	2.16.4.0.00301943	2.16.4.0	1.16.4.0.310284			Full Version Release
2016.4	1	2.16.4.1	2.16.4.0	2.16.4.1	2.16.4.0.00301943	2.16.4.0	1.16.4.0.310284			GUI and Web Service updates
2016.4	2	2.16.4.2 (3GB)	2.16.4.0	2.16.4.1	2.16.4.0.00301943	2.16.4.0	1.16.4.2.460241			GUI and Patient Portal updates
2016.4	3	2.16.4.3 (3GB)	2.16.4.0	2.16.4.3	2.16.4.3.00483474	2.16.4.0	1.16.4.3.489120			GUI and Patient Portal updates
2016.4	4	2.16.4.4 (3GB)	2.16.4.0	2.16.4.3	2.16.4.3.00483474	2.16.4.0	1.16.4.3.489120			GUI
2016.4	5	2.16.4.5 (3GB)	2.16.4.0	2.16.4.3	2.16.4.3.00483474	2.16.4.0				GUI
2016.4	6	2.16.4.6 (3GB)	2.16.4.0	2.16.4.3	2.16.4.3.00483474	2.16.4.0				GUI
2016.5	-	2.16.5.0 (3GB)	2.16.5.0	2.16.5.0	2.16.5.0.00349303	2.16.5.0	1.16.5.0.362009			Full Version Release
2016.6	-	2.16.6.0 (3GB)	2.16.6.0	2.16.6.0	2.16.6.0.00411295	2.16.6.0	1.16.6.0.432471			Full Version Release
2016.6	1	2.16.6.1 (3GB)	2.16.6.0	2.16.6.0	2.16.6.0.00411295	2.16.6.0	1.16.6.1.468583			GUI and Patient Portal updated
2016.7	-	2.16.7.0 (3GB)	2.16.7.0	2.16.7.0	2.16.7.0.00490835	2.16.7.0	1.16.7.0.493031	2.16.7.0.493008		Full version release
2016.7	1	2.16.7.1 (3GB)	2.16.7.0	2.16.7.1	2.16.7.0.00490835	2.16.7.0	1.16.7.0.493031	2.16.7.0.493008		GUI and Web Service updates
2016.7	2	2.16.7.2 (3GB)	2.16.7.0	2.16.7.2	2.16.7.0.00490835	2.16.7.0	1.16.7.0.493031	2.16.7.0.493008		GUI and Web Service updates
2016.7	3	2.16.7.3 (3GB)	2.16.7.0	2.16.7.3	2.16.7.0.00490835	2.16.7.0	1.16.7.0.493031	2.16.7.0.493008		GUI and Web Service updates
2016.7	4	2.16.7.4 (3GB)	2.16.7.0	2.16.7.3	2.16.7.0.00490835	2.16.7.0	1.16.7.0.493031	2.16.7.0.493008		GUI
2016.7	5	2.16.7.5 (3GB)	2.16.7.0	2.16.7.3	2.16.7.0.00490835	2.16.7.0	1.16.7.0.493031	2.16.7.0.493008		GUI
2016.7	6	2.16.7.6 (3GB)	2.16.7.0	2.16.7.6	2.16.7.0.00490835	2.16.7.0	1.16.7.0.493031	2.16.7.0.493008		GUI and Web Service updates
2016.7	7	2.16.7.7 (3GB)	2.16.7.0	2.16.7.7	2.16.7.0.00490835	2.16.7.0	1.16.7.0.493031	2.16.7.0.493008		GUI and Web Service updates
2016.7	8	2.16.7.8 (3GB)	2.16.7.0	2.16.7.7	2.16.7.8.00683507	2.16.7.0	1.16.7.0.493031	2.16.7.0.493008		GUI and DB updates
2016.7	9	2.16.7.9 (3GB)	2.16.7.0	2.16.7.9	2.16.7.9.00715012	2.16.7.0	1.16.7.0.493031	2.16.7.9.723457		GUI, Web Services, DB updates and UM Portal
2016.7	10	2.16.7.10 (3GB)	2.16.7.0	2.16.7.10	2.16.7.9.00715012	2.16.7.0	1.16.7.0.493031	2.16.7.9.723457		GUI and Web Service updates
2016.7	11	2.16.7.11 (3GB)	2.16.7.0	2.16.7.11	2.16.7.11.00761267	2.16.7.0	1.16.7.0.493031	2.16.7.9.723457		GUI, Web Service and DB updates
2017.1	-	2.17.1.0 (3GB)	2.17.1.0	2.17.1.0	2.17.1.0.00559886	2.17.1.0	2.17.1.0.572290	2.17.1.0.00000		Full Version Release
2017.1	1	2.17.1.1 (3GB)	2.17.1.0	2.17.1.1	2.17.1.1.00589952	2.17.1.0	2.17.1.0.572290	2.17.1.0.00000		GUI, Web Service and DB updates
2017.1	2	2.17.1.2 (3GB)	2.17.1.0	2.17.1.2	2.17.1.2.00621962	2.17.1.0	2.17.1.0.572290	2.17.1.0.00000		GUI, Web Service and DB updates
2017.1	3	2.17.1.3 (3GB)	2.17.1.0	2.17.1.3	2.17.1.3.00640480	2.17.1.0	2.17.1.0.572290	2.17.1.0.00000		GUI, Web Service and DB updates
2017.1	4	2.17.1.4 (3GB)	2.17.1.0	2.17.1.4	2.17.1.4.00692239	2.17.1.0	2.17.1.4.701924	2.17.1.0.00000		GUI, Web Service, DB and Patient Portal updates
2017.1	5	2.17.1.4 (3GB)	2.17.1.0	2.17.1.5	2.17.1.4.00692239	2.17.1.0	2.17.1.4.701924	2.17.1.0.00000		Web Service
2017.1	6	2.17.1.6 (3GB)	2.17.1.0	2.17.1.5	2.17.1.6.00745281	2.17.1.0	2.17.1.4.701924	2.17.1.0.00000		GUI and DB Updates
2017.1	7	2.17.1.7 (3GB)	2.17.1.0	2.17.1.5	2.17.1.6.00745281	2.17.1.0	2.17.1.4.701924	2.17.1.0.00000		GUI update
2017.1	8	2.17.1.8 (3GB)	2.17.1.0	2.17.1.5	2.17.1.6.00745281	2.17.1.0	2.17.1.4.701924	2.17.1.0.00000		GUI update
2017.2	-	2.17.2.0(3GB)	2.17.2.0	2.17.2.0	2.17.2.0.00695782	2.17.2.0	2.17.2.0.702238	2.17.2.0.702213	2.17.2.0.702226	Full Version Release. First release of Provider Portal

No part of this material may be published, reproduced, stored in a retrieval system, or transmitted

in any form or by any means without the prior written permission from eRAD.

INSTALLING

CLIENT/GUI

Copy and replace the current rRIS...zip file with the eRAD_rRIS_2016.7.11.zip file provided with this release.

Be sure to make a backup of the ris.exe.config file contained within the current .zip folder.

WEB SERVICE

This updated is only required for the Wedge Web Services. The Core RIS Service and Document Distribution Service are not required to be updated.

1. The web service upgrade consists of replacing the files in the RIS Web Service directory with the files supplied in the rRISService folder with this build. Always create a backup of the files being replaced. This upgrade includes 134 files in the rRISService folder and 7 sub folders. Of those folders, 1 is a folder titled **"XSL"** that contains a sub folder and files within the subfolder. Another folder is titled **"deploy"** that contains the new .config files that will be deployed with the user of the file called "ServicesConfigWizard.exe" (see instructions below). Folders ar (Arabic), he (Hebrew), pt_BR (Brazilian Portuguese) and es-AR (Argentina Spanish) are localization folders. The WedgePlugins folder contains various plugin files for RADAR, MIRTH, Ensemble, etc...

Services Configuration Wizard

With the release of 42 to decrease the chance of losing configuration setting and missing new configuration options, we will no longer include the configuration files in the release in the main set of files, but they will now exist in a "deploy" folder, which will contain the three site configurable config files; applicationsettings, connectionstrings, and services as well as a copy of the rRISServices.exe configuration file. The contents of this folder should not be required to be touched.

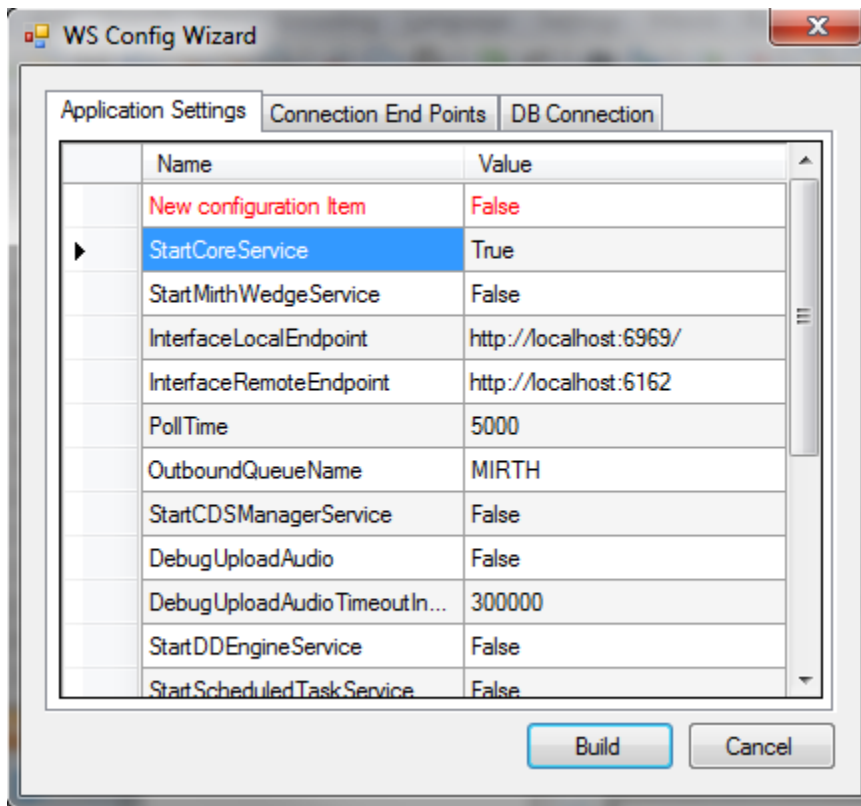
On the install of a new service, all files will be copied to the appropriate locations on the server (no configurations will be over written). If instructed or to confirm no new configurations have been added the user can run the new application "ServicesConfigWizard.exe"

This application will read the existing configuration file(s) (if files exist), and compare to the provided new configuration files then will display three tabs, for each configuration file:

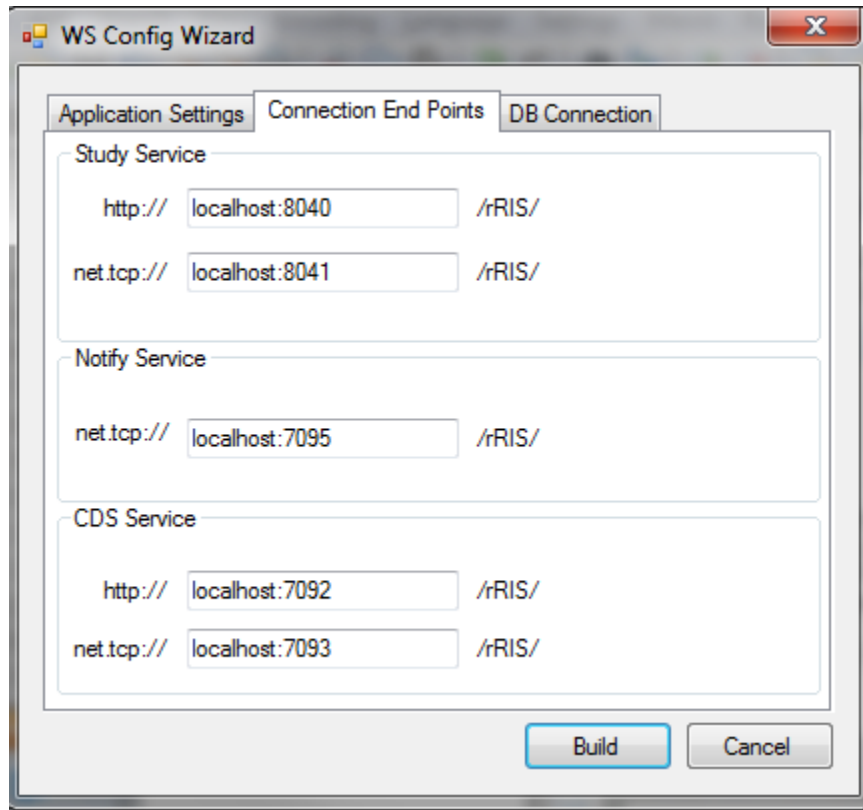
No part of this material may be published, reproduced, stored in a retrieval system, or transmitted

in any form or by any means without the prior written permission from eRAD.

Application Settings: all existing configuration value will be displayed, if there are any new configuration entries they will be displayed in red.



Connection End Points: will display the existing configuration, if the value is left blank then that entry will not be created, in the case of “Study Service” or “CDS Service” if both http and net.tcp were not provided then that endpoint will not be created at all.



DATABASE UPDATES

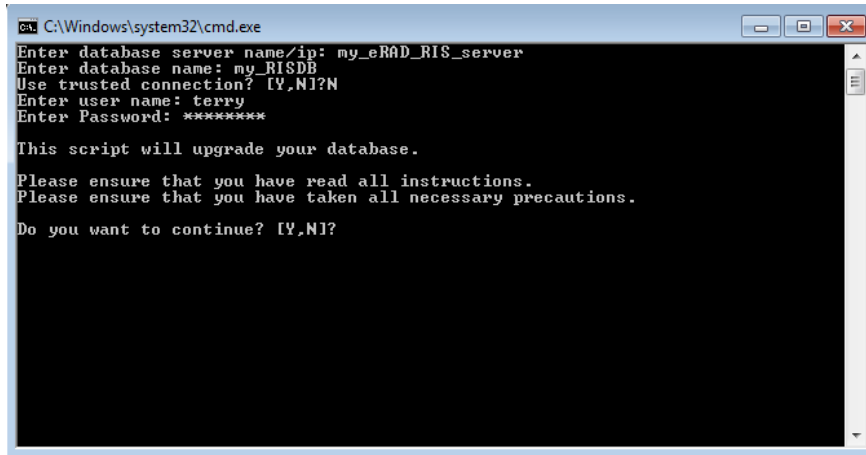
Always run the upgrade scripts in a test environment of the actual database to make sure they run cleanly. If any errors occur please contact development.

Note: There is a new upgrade process introduced with B43.1 called "RunUpgrade.bat". The batch file will open a command window. This process will prompt you for the database server name, database name and authentication credentials. There is no need to run the database upgrade scripts manually as was done in previous releases.

- 1) From the upgrade folder, double click the “RunUpgrade.bat” command file.
- 2) Enter the server name, database name and authentication credentials to the database. You have 2 choices for authentication credentials.

- 3) You can choose to use “Trusted connection”. Using this option will pass the identity of the currently logged on user. If this user has “db_owner” access to the eRAD RIS database then feel free to use this options.
- 4) If you decide not to use “Trusted connection” then you will be prompted for user id and password.

Example:



```
C:\Windows\system32\cmd.exe
Enter database server name/ip: my_eRAD_RIS_server
Enter database name: my_RISDB
Use trusted connection? [Y,N]?N
Enter user name: terry
Enter Password: *****

This script will upgrade your database.
Please ensure that you have read all instructions.
Please ensure that you have taken all necessary precautions.
Do you want to continue? [Y,N]?
```

- 5) After the upgrade program has finished you can find the upgrade logs in the “log” folder. The file name will be eRAD_RIS_db_upgrade_timestamp.log, where timestamp is a value representing the date and time the upgrade started. If you see any errors please contact the development team